



Whats App



Email

User Manual



Made in China



INTRODUCTION

Action Camera is a high-definition digital motion video recording device, created to reach market demand. It has a wide variety of the leading features for digital video recording, photo shooting, audio recording with screen display and detachable battery. Best suitable for vehicle recording, outdoor sports, home security, diving and more related activities. Allowing you to enjoy the moments while capturing every scene anytime, anywhere.

PRODUCT OVERVIEW



■ Product Instructions

- 1 - Lens
- 2 - 2.0-inch Screen
- 3 - Working & Charging Indicator
- 4 - Shutter Button / Select Button

5 - Power Button / Mode Button

9 - Built-in Mic

6 - Battery Door

10 - Type-C Port

7 - Bracket Hole

11 - Up Button

8 - Speaker

12 - Down Button

■ Button Operation Instructions

● **Power Button / Mode Button:**

- In the OFF state, press the Power Button shortly to turn on the camera.
- In the ON state, press and hold the Power Button for seconds to turn off the camera.
- In preview mode, press the Power Button shortly to switch shooting mode.
- In the main settings menu, press the Power Button shortly to cycle through the main settings.
- In the sub settings menu, press the Power Button shortly to exit the current settings.
- In playback / mode selection mode, press the Power Button shortly to return to the previous option.

● **Shutter Button / Select Button:**

- In video mode, press the Shutter Button shortly to start/stop recording video.
- In photo mode, press the Shutter Button shortly to capture photos.
- In video / photo mode, press and hold the Shutter Button for seconds to enter into mode selection menu.
- In the setting / playback mode, press the Shutter Button shortly to select the desired option.
- In the video playback mode, press the Shutter Button shortly to start/pause play-backing the video file.

● **Up Button:**

- In video mode, press and hold the Up Button for seconds to turn on the camera's Wi-Fi.

- In Wi-Fi mode, press the Up Button to turn off the camera's Wi-Fi.
- In video/p mode, press the Up Button shortly to enter into setting mode.
- In the playback mode / sub-setting menu / mode selection menu, press the Up Button shortly to switch to the previous option.
- In the video /photo playback mode, press and hold the Up Button for seconds to enter into delete menu.

- **Down Button:**

- In video / photo mode, press the Down Button shortly to enter into playback mode (SD card inserted).
- In the playback mode / sub-setting menu / mode selection menu, press the Down Button shortly to switch to the next option.

GETTING STARTED

Hello!

Welcome to your new camera. To capture video and photos, you need a micro SD card.

■ Storage / Micro SD Card

We strongly recommend to use the branded memory cards purchased from regular channels for maximum reliability and stability during recording and in high vibration activities.

Use brand name memory cards that meet these requirements:

- micro SD, micro SDHC, or micro SDXC
- **UHS-III rating** at least for 4K Video resolution
(at least 60MB/S or above read and writing speed)
- Capacity up to 128GB (FAT32)

Notes:

- ✧ Please format the micro SD card first in this camera before using.
- ✧ To keep your micro SD card in good condition, reformat it on a regular basis. Reformatting erases all of your content, so be sure to offload your content first.

- ✧ FAT32 format Micro SD card stops recording when the storage of each file is over 4 GB and starts to record again on a new file.

■ Powering On / Off

● **Power On:**

Press the Power Button shortly. The camera beeps while the camera status light is on. When information appears on the screen, your camera is on.

● **Power Off:**

Press and hold the Power Button for seconds. The camera beeps while the camera status light is off. When information disappears on the screen, your camera is off.

■ Start / Stop recording video

To record video, verify the camera is in desired Video Setting option, such as Loop Video/Time-lapse/Slow Motion etc.

● **To Start Recording:**

Press the Shutter Button. The camera's blue working indicator will flash and a Red record time will show on the screen while recording.

● **To Stop Recording:**

Press the Shutter Button. The camera working indicator stop flashing on the screen to indicate recording has stopped

Notes:

- ✧ FAT32 format Micro SD card stops recording when the storage of each file is over 4 GB and starts to record again on a new file
- ✧ This camera automatically stops recording when the battery is out of power. Your video will saved before the camera powers off. The video will not be saved, and even the video will be damaged, if the batter is took out or loss power during recording.
- ✧ Due to the battery's characteristics and environmental temperature requirements, such as high temperatures can cause the battery to expand. In high temperature environments, especially in the summer, when you use this camera as a dash camera, we strongly recommend

that you remove the battery and use the car power directly, but when the car's engine is turned off, the camera will immediately turn off, the date&time set and last video recorded will not be saved

- ❖ This camera automatically stops recording when the SD card is full,if the looping record function is turn off.

■ Capture photos

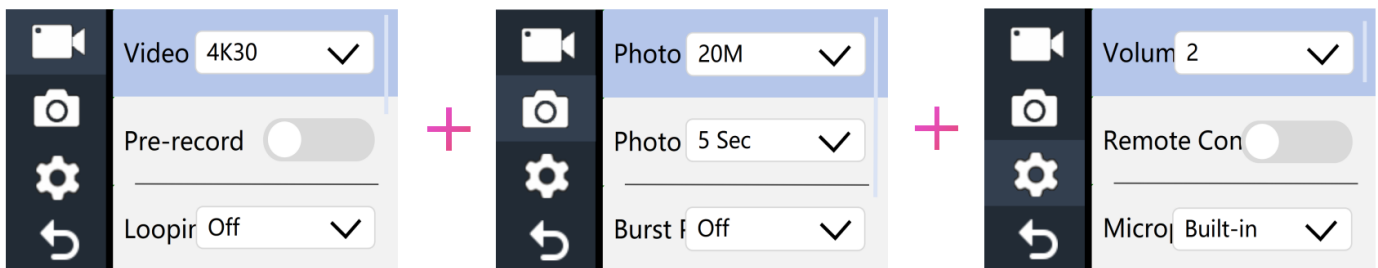
To capture photo,verify the camera is in desired Photo Setting option, such as Time-lapse Photo/burst photo/self-timer photo etc.

● **To capture photos:**

Press the Shutter Button. The camera will emit the camera shutter sound each time a photo is taken. (To stop Time Lapse Photo,Press the Shutter Button again)

CUSTOMIZING YOUR CAMERA

There are 3 Setting Modes: Video Setting, Photo Setting and System Setting



■ Video Setting Mode

- 1) Verified in Video Mode, press and hold the "Up Button" for seconds to enter into setting mode.
- 2) Press the "Up Button" or "Down Button" to cycle through various options, press the "Shutter Button" to select the desired option.
- 3) To exit video setting mode, press the "Power Button" switch to the "Return" icon in the bottom left corner of the screen ,and press the "Shutter Button".

❖ **Video Settings:**

- **Video Resolution: 4K 60、4K30、1080P120、1080P60、1080P30**

Default setting is **4K 30fps**.

Notes:

- ✧ This camera is capable of recording 4K30fps or above Video, with higher resolution offering greater clarity and detail due to the increased number of pixels. However, higher resolution video also results in larger file sizes.
- ✧ When capturing video at high resolution or high frame rates such as 4K 60/30fps, the camera may become hot and consume more power, which is normal.
- ✧ Capturing high-resolution or high-fps videos in low-temperature scenes can consume more power.
- ✧ FAT32 format Micro SD card stops recording when the storage of each file is over 4GB and starts to record again on a new file.

- **Pre-record: Off / On**

Default setting is **Off**.

After enabling prerecord, the camera can start recording videos from a few seconds before pressing the shutter button. The prerecord function is very suitable for recording exciting moments of unexpected activities, such as fishing, etc

- **Looping Video : Off / 1Min / 3Min / 5Min**

Default setting is **Off**.

The files will be saved every 3 minutes if you choose 3 minutes. When the memory card is full, the new files will cover the existed one if the loop recording is on; If it is off, the camera won't record any more when the card is full, need to format the memory card or change a new one.

Note: If you turn on Looping Video, Time Lapse and Slow Motion will not be available.

- **Slow Motion : Off / On**

Default setting is **Off**.

Slow Motion Video, also known as high-frame-rate video, refers to a

technique where the camera records video at a higher frame rate and then plays it back at a lower speed, typically 30 frames per second, resulting in a smoother and more dramatic effect.

Note: If you use Slow Motion, Time-Lapse and Looping Video will not be available.

- **Time Lapse: Off / 1 Sec / 3 Sec / 5 Sec / 10 Sec / 30 Sec / 1 Min**

Default setting is **Off**.

Time Lapse creates video from frames captured at specific intervals. This option lets you capture a time lapse event and immediately view or share it as a video. Select 3 seconds means recording 3 seconds to get one frame per second. For example: If you select 4K/30FPS and 3 secs, you need to record 90secs, then you can get 1 sec video for 4K/30FPS.

Notes:

- ✧ Time Lapse Video is captured without audio.
- ✧ If you select Time-Lapse, Looping Video and Slow Motion will not be available.

- **Date Stamp: Off / Date / Date & Time**

Default setting is **Date & Time**.

If you turn on Stamp, this camera adds stamp to the video you take.

If you turn off Stamp, this camera will not add stamp to the video you take.

Note: This camera does not add date stamp to the videos you take if time lapse is on.

- **Exposure(EV): -2 ~ +2**

Default setting is **0**.

By default, your camera uses the entire image to determine the appropriate exposure level. However, EV lets you select an area that you want the camera to prioritize when determining exposure. This setting is particularly useful in shots where an important region might otherwise be over- or underexposed.

Notes:

- ✧ It is recommended to adjust the EV value higher in the low light scenes such as indoor/night/tunnel/underground parking lot to obtain better low light video effect.
- ✧ To avoid overexposure, it is recommended to lower the EV value in high light areas such as beaches and snowfield to achieve better video effects.

■ Photo Setting Mode

- 1) Verified in Photo Mode, press and hold the "Up Button" for seconds to enter into setting mode.
- 2) Press the "Up Button" or "Down Button" to cycle through various options, press the "Shutter Button" to select the desired option.
- 3) To exit Photo Setting Mode, press the "Power Button" switch to the "Return" icon in the bottom left corner of the screen ,and press"Shutter Button".

❖ **Photo Settings:**

- **Photo Resolution: 48MP/36MP/20MP/16MP/12MP/8MP/5MP**

Default setting is **20MP**.

- **Photo Lapse: Off / 2 Sec / 5 Sec / 10 Sec / 20 Sec / 30 Sec / 1 Min**

Default setting is **Off**.

Photo Time Lapse captures a series of photos at specified intervals. Use this mode to capture photos of any activity, then choose the best ones later.

Note: If Photo Lapse is on, Burst Photo and self-timer will not be available.

- **Burst Photo: Off / 3 Photos / 5 Photos**

Default setting is **Off**.

Continuous shooting can take up to 5 photos in a certain amount of time, making it ideal for fast-moving events.

Note: If Burst Photo is on, Photo Lapse and self-timer will not be available.

- **Self-timer: Off / 2 Sec / 5 Sec / 10 Sec**

Default setting is **Off**.

A self- timer gives a delay between pressing the shutter release and the shutter's firing. It is most commonly used to let photographers to take a photo of themselves.

Note:If self-timer is on, Time Lapse Photo Lapse and Burst Photo will not be available.

■ System Setting Mode

- 1) Verified in Video / Photo Mode, press and hold the "Up Button" for seconds to enter into Video / Photo Setting Mode.
- 2) Press the "Power Button" switch to System Setting Mode.
- 3) Press the "Up Button" or "Down Button" to cycle through various options, press the "Shutter Button" to select the desired option.
- 4) To exit System Setting Mode, press the "Power Button" switch to the "Return" icon in the bottom left corner of the screen ,and press"Shutter Button".

❖ **System Settings:**

● **Volume: Off / 1 / 2 / 3**

Default setting is **2**.

Set the volume of sound recorded by the camera.

● **Remote Control: Off / On**

Default setting is **Off**.

If Remote Control is on, The camera can be controlled through a exclusive remote controller.

● **Microphone: Built-in / External**

Default setting is **Built-in**.

Set the camera pickup method.

● **Car Mode: Off / On**

Default setting is **Off**.

If you turn on car mode and connect camera with car charger, the camera will turn on automatically and start recording if you start your car' s engine. and

the camera will turn off and stop recording if you Turn off the car' s engine.

Notes:

- ✧ Must use 5V 1-2A output car charger.
- ✧ Using as a dash cam, we suggest to turn on the Loop Video, Car Mode, Upside Down and Screen Saver at same time.

- **USB Function: MSDC / Charging**

Default setting is **Charging**.

- **ISO: Auto / ISO100 / ISO200 / ISO400 / ISO800 / ISO1600 / ISO3200**

Default setting is **Auto**.

ISO determines the camera' s sensitivity to light, and creates a trade-off between brightness and resulting image noise. Image noise refers to the degree of graininess in the image. In low light, higher ISO values result in brighter images, but with greater image noise. Lower values result in lower image noise, but darker images. When you change this setting, the display immediately shows you the effect on your image.

- **White Balance: Auto / Cloudy / Daylight / Incandesc. / Fluoresc.**

Default setting is **Auto**.

AWB (Auto White Balance) lets you adjust the color temperature of videos and photos to optimize for cool or warm lighting conditions. When you change this setting, the LCD display immediately shows you the effect on your image.

- **Language: English/简体中文/繁體中文/ Italiano / Español / Portugues / Deutsch / Français / 日本語 / 한국어**

Default setting is **English**.

You can set the camera 's system language.

- **Date Format: YY MM DD/ MM DD YY / DD MM YY**

The date and time are automatically updated when you connect your camera to the Wi-Fi app. However, you can manually change these settings, if needed.

Note: If the battery is removed from the camera for an extended period of time, the date and time will be reset automatically.

- **Date & Time: Year-Month-Day-Hour-Minute-Second/Cancel/Confirm**

- **Screen Saver: Off / 1Min / 3Min / 5Min**

Default setting is **Off**.

Turns off the screen after a period of inactivity to save battery life. To turn on the screen again, press any button on the camera.

- **Power Off: Off / 1Min / 3Min / 5Min**

Default setting is **Off**.

Powers off your camera after a period of inactivity to save battery life.

- **Upside Down: Off / On**

Default setting is **Off**.

This setting determines the orientation of setting menu.

- **Format: Cancel / Confirm**

To keep your micro SD card in good condition, reformat it on a regular basis. Reformatting erases all of your content, so be sure to offload your content first.

- **Reset: Cancel / Confirm**

This option resets all settings to their default values.

- **Version : Brand / Model / Version / Updated**

You can check the model, software version and updated time of your camera.

Note: Software version is the main information of firmware upgrade, troubleshooting and after-sales.

CONNECTING TO WIFI APP

The Wi-Fi App lets you control your camera remotely using a smart phone or tablet. Features include full camera control, live preview, playback and sharing of selected content and more.

■ Download and Install FUN DV app

- **Option 1:** Download the **FUN DV** App or to your phone from the Google Play or Apple App Store.
- **Option 2:** Scan the QR code below to download the **FUN DV** App or to your phone.



Android 7.0
or later



iOS 10.0
or later



Notes:

Google, Android, Google play, App Store and other marks are the trademarks of Google LLC.

■ Turn On / Off Camera Wi-Fi

Turn on the camera, and verified it is in Video mode, press and hold the Up Button for seconds to turn on the camera's WIFI.

■ Connect to the FUN DV APP

- 1) Turn on Camera's Wi-Fi;
- 2) Turn on Wi-Fi Setting of your phone, connect to the Wi-Fi SSID named "**Fun DV_xxxx** (Random serial number)" or "**Action Cam_xxxx** (Random serial number)" .
- 3) Enter the password: "**12345678**" ;
- 4) Launch the app "**Fun DV**" on your phone

REMOTE CONTROLLER

Place the Remote Control On Your Wrist and Acquiesce Ultra-convenient Control For Hiking, Biking, Skiing, Bungee and more while installing the camera on your Helmet or other place.



■ **Remote: Splash-proof only / Range: 5M**

■ **How to turn on/off the remote function**

Select **ON/OFF** in the System Setting Menu to turn on/off the remote controller.

Note: Verify the camera is in Video/Photo preview mode first, if the camera is set in Playback or Setting Menu, the camera can not receive the remote signal and can not be controlled by the remote.

■ **VIDEO**

● **To start recording**

Press the Grey Video Button.

● **To stop recording**

Press the Grey Video Button again.

■ **PHOTO**

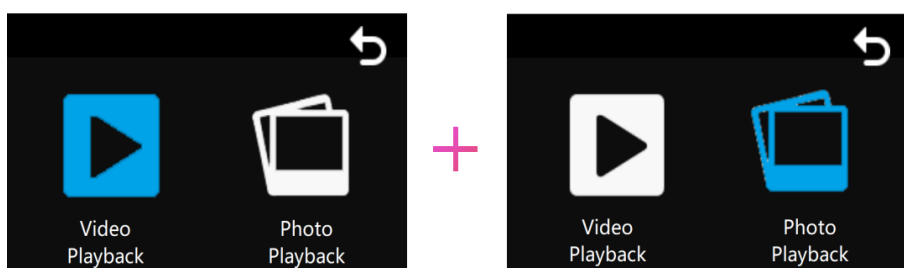
● **To take a photo**

Press the Red Photo Button. The camera will emit a camera shutter sound.

PLAYBACK & DELETE CONTENT

You can play back your content on the camera screen. You can also play back content by inserting the micro SD card directly into a computer or TV. With this method, playback resolution depends on the resolution of the device and its ability to play back that resolution.

2 Playback Mode: Video Playback Mode & Photo Playback Mode.



In Playback Mode, You can playback or delete your content on the camera.

■ Playback videos and photos on your camera

1. Turn on camera.
2. Press and hold the Down Button for seconds to enter playback mode.
3. Press Up/Down Button to cycle though target Playback mode and press Shutter Button to select desired Playback mode.
4. Press Up/Down Button to locate video files / playback photo files.
5. Press Shutter Button to start/pause play-backing video file.
6. To exit, press Power Button.

Note: If your memory card contains a lot of content, it might take a minute for it to load.

■ Delete single file on camera

1. Enter Video / Photo Playback mode.
2. Press Up/Down Button to locate video files / playback photo file you want to delete.
3. Press and hold the Up Button for seconds to enter the file deletion menu.
4. Press Up/Down Button switch to "Confirm" option.
5. Press Shutter Button to delete the selected file.

BATTERY

The camera contains sensitive components, including the battery. Avoid exposing your camera to very cold or very hot temperatures. Low or high temperature conditions may temporarily shorten the battery life or cause the camera to temporarily stop working properly. Avoid dramatic changes in temperature or humidity when using the camera, as condensation may form on or within the camera.

■ Battery Storage and Handling

- Do not store in temperature above 140°F/60°C.
- Avoid exposing your camera to very cold or very hot temperatures. Low or high temperature conditions may temporarily shorten the battery life or cause the camera to temporarily stop working properly. Avoid dramatic changes in temperature or humidity when using the camera, as condensation may form on or within the camera.
- Do not dry the camera or battery with an external heat source such as a microwave oven or hair dryer.
- Damage to the camera or battery caused by contact with liquid inside the camera is not covered under the warranty.
- Do not store your battery with metal objects, such as coins, keys or necklaces. If the battery terminals come in contact with metal objects, this may cause a fire.
- Do not make any unauthorized alterations to the camera. Doing so may compromise safety, regulatory compliance, performance, and may void the warranty.
- Please do not throw the camera or its battery to the garbage, find a specific recycling point for it.

WARNING:

- ◆ Do not drop, disassemble, open, crush, bend, deform, puncture, shred, microwave, incinerate or paint the camera or battery.
- ◆ Do not insert foreign objects into the battery opening on the camera.
- ◆ Do not use the camera or the battery if it has been damaged - for example, if cracked, punctured or harmed by water. Disassembling or puncturing the battery can cause an explosion or fire.

■ Charging the Battery

1. Connect the camera to USB power supply (5V/1A commended).
2. The charging status light remains ON while the battery is charging.

3.The charging status light will turn OFF when the battery is fully charged.

Notes:

- ✧ Charging time: 4-hours for 5V 1A power supply
- ✧ Please make sure the camera is shuttled down while charging.
- ✧ Remove the battery before using as a dash camera and use 5V/1A car charger.

■ Maximizing Battery Life

If the battery reaches 0% while recording, the camera saves the file and powers off.

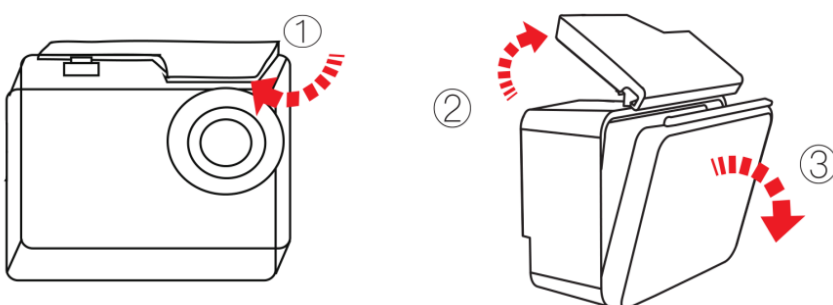
To maximize battery life, follow these guidelines when possible:

- Turn off Wireless Connections
- Capture video at lower frame rates and resolutions
- Use Screen Saver setting.

WATERPROOF CASE

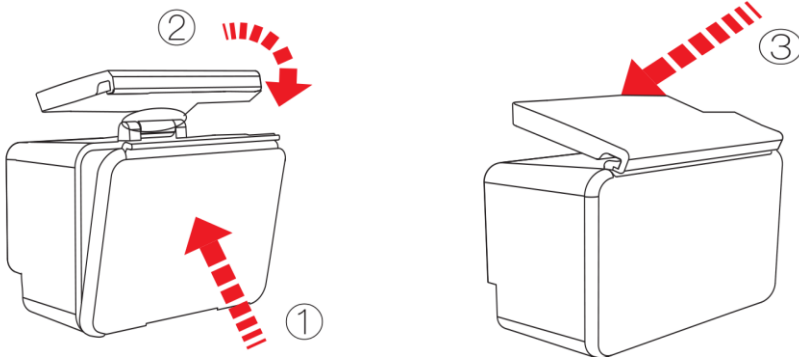
Specially designed for diving, surfing, snorkeling and other water sports activities. The waterproof case does not only offer greater waterproof protection to your camera, it also offers extra protection against dust, scratches and shocks. Light and easy to carry, excellent PMMA material endows it with high quality. With the use of the waterproof case, you can record activities even 30M under water and it won't damage the shooting effect, clear and vivid. Your movement and photographic effect won't be affected by anti-surf pressure. Convenient to link camera with other accessories mount through this waterproof case.

■ How to open the waterproof case:



- 1) Pick the black latch up on the top of the case.
- 2) Pull up the buckle of the case.
- 3) Open the back cover of the case.

■ How to close the waterproof case:



- 1) Please close the back door of the case.
- 2) Pull down the latch and lock it to the back door.
- 3) Press down the buckle.

Tips:

1. Please tear the protective films on the waterproof case lens before shoot/record;
2. To achieve better waterproof performance, the voice record within the waterproof case will be weakened.

■ Usage Notes

In order to ensure the waterproof performance, please carefully refer to the operation and maintenance precautions as following. The machine is not waterproof due to improper operation and improper maintenance, which is not covered by the warranty.

- In order to capture a clear video or photo, please tear off the lens protection film of the waterproof shell before use, and protect well the lens window from scratch after use.
- Before sealing the waterproof case, keep the camera housing' s White Silicone Seal Ring clean, a single hair or grain of sand cause a leak. You can

test by closing the case without inserting the camera. Submerge the case completely in the water for about a minute. Remove the case from the water, dry off its exterior with a towel, and then open the case. If the interior is dry, the case is safe for use under water.

- Before sealing the waterproof case, make sure the waterproof case is sealed well before use. If the white silicone sealing ring is found to be hardened, deformed or damaged, please stop using this water tank and replace the new waterproof shell in time
- Please dry it in time after use, otherwise the waterproof shell metal button will rust and reduce the waterproof performance. After use in seawater or seaside, you will need to rinse the outside of the housing with fresh water and then dry. This will prevent corrosion of the hinge pin and salt buildup in the seal, which can cause failure. Do not flush the interior with water
- When use the camera with the waterproof in low temperature, such as Winter, Rainy Day, Underwater and so on, please do the anti fogging treatment so as to avoid the blurred video. It is recommended to add anti-fog film; insert the anti-fog film into the waterproof case to prevent the lens from fogging in low temperature or humid environment;
- Keep it safe from falling and dropping and high temperature above 80°C.
- Waterproof shell is vulnerable product, we strongly recommend, according to the usage of the environment and frequency, to replace the waterproof shell in time.

SAFETY WARNINGS

- This is a 4K action camera, It is normal for the housing to exert heat under use. Don't expose the product directly to high temperatures over 50°C.
- It require a name band Class10 or higher micro SD card, Format your SD card on the camera first before using.
- Keep it safe from falling and dropping.
- Do not place heavy objects on the camera.

- Keep it distance from any strong magnetic interference objects like electrical machine to avoid strong radio waves that might be damaging the product and affect the sound or image quality.
- Keep the camera away from water and liquids (unless equipped with waterproof case). This may cause the the camera to malfunction.
- Don' t place your Micro SD card near strong magnetic objects to avoid data error or loss.
- Must remove the battery before using as a dash camera and use brand-name 5v/1A car charger.
- In case of overheating, unwanted smoke or unpleasant smell from the device, unplug it immediately from the power outlet to prevent hazardous fire.
- Keep it safety from children while on charging.
- Do not use the camera when it is low power.
- Do not use or turn off the camera while it is in charging.
- Stored the device in a cool, dry and dust free location.
- Do not attempt to open the case of the camera or modify it in any way,if the camera has been detached,the warranty will be void.

Specification could be subject to modification due to updating without notice, please regard the actual product as the standard form. If need the newest updated software,please contact our after sale service team!

CONTACT US

For any inquiries, issues or comments concerning our products, please send E-mail to the address below or call us. We will respond as soon as possible.

E-mail: cs@onlincam.com

Web: www.onlincam.com