



Whats App



Email

Action camera User Manual

Q60 Pro

Made in China



MAINTENANCE CAUTIONS

■ Underwater Usage Notes

This camera are splash, water, and dust resistant and were tested under controlled laboratory conditions with a rating of IP68 under IEC standard 60529 (maximum depth of 15 meters up to 30 minutes). Splash, water, and dust resistance are not permanent conditions and resistance might decrease as a result of normal wear.

■ The waterproof conditions for IP68 :

- Clear water at normal temperature, tested at a depth of 15 meters.
- The testing time is 30 minutes.
- The temperature difference between the water temperature and the product shall not exceed 5 degrees Celsius.

In order to ensure the waterproof performance of the camera, please carefully refer to the operation and maintenance precautions as following. The camera is not waterproof due to improper operation and improper maintenance, which is not covered by the warranty.

1. Make sure to check whether the silicone pads on the waterproof cover is clean before using underwater. Otherwise it will affect the camera's waterproof ability, and a single hair or sand will cause leakage!
2. Make sure to check whether the silicone pad on the battery waterproof cover is intact,Damage to the silicone pad will cause water leakage!
3. Make sure that the battery waterproof cover is tightly closed before using underwater. If not,the camera will not be waterproof.
4. Avoid jumping into water a high speed with camera. Otherwise, the impact may result in water water leakage.
5. DO NOT use the camera in a hot spring or expose the product directly to high temperatures over 40°C. High temperature may cause deformation of the waterproof seal on the camera body and lose its waterproof function.
6. Keep it safe from falling and dropping. Falling and drop will cause damage to the watertight seal on the camera body and the camera is not waterproof.
7. The microphone and speaker's hole on the camera has built in waterproof material. DO NOT remove the waterproof material or poke the holes.Otherwise, the camera will no longer be waterproof.
8. Due to the presence of a large amount of microorganisms and salts in seawater, it is important to clean the camera with clean water after use to prevent seawater microorganisms from adhering to the camera surface or metal parts for a long time,

which can cause the camera to decay, rust, etc., and cause the camera's waterproof function to fail.

9. Clean the camera with clean water after using underwater. Allow it to dry naturally before using again.
10. This camera is not waterproof unless the battery cover are closed tightly.

CAUTIONS

- This is a Ultra HD action camera, It is normal for the housing to exert heat under use.
- Don' t expose the product directly to high temperatures over 45°C.
- Please properly protect well the lens and screen of camera after using.
- Keep it safe from falling and dropping.
- Keep it distance from any strong magnetic interference objects like electrical machine to avoid strong radio waves that might be damaging the product and affect the sound or image quality.
- In case of overheating, unwanted smoke from the device, unplug it immediately from the power outlet to prevent hazardous fire.
- Stored the device in a cool, dry and dust free location.
- Do not modify the camera it in any way,if the camera has been detached,the warranty will be void.

OVERVIEW OF CAMERA

The camera is an all-weather action camera, equipped with 6-axis gyroscope EIS technology, which can take UHD photos and videos. This camera adopting watertight seal and a hydrophobic coating on the camera body, which can reach IP68 waterproof level. This action camera is weatherproof and distinct to unlock all the filming scenarios and ease your vlogging experience. Its IPX8 water-resistant design can protect the action camera from rain, snow and water splashing.



1. Lens
2. Speaker
3. Internal Microphone
4. Shutter Button / Select Button
5. Battery Waterproof Cover
6. Indicator
7. Power Button
8. Touch Screen

■ **Button Operation Instructions**

● **Power Button:**

1. In the Power off state, press shortly to turn on the camera;
2. In the power on state, press and hold for 3 seconds to turn off the camera;
3. In video or photo mode, press shortly to switch between front and rear screen;
4. In playback mode, press shortly to switch between video and photo playback modes;
5. In video or photo playback mode, press shortly to return to the playback menu;
6. In the settings menu, press shortly to switch settings mode;
7. Shortly press to turn off camera WIFI while WIFI is on;
8. In screen saver mode, shortly press to wake up the display screen;

● **Shutter Button:**

1. In video mode, short press to start/stop recording;
2. In photo mode, short press to take photos;
3. In playback mode, short press to confirm the selected playback mode;
4. In video playback mode, short press to play/pause the video file;
5. In settings mode, short press to confirm the selected option;
6. In screen saver mode, short press to wake up the display screen

GETTING STARTED

Welcome to your new camera. To capture video and photos, you need a micro SD card.

■ **Storage / Micro Cards**

We strongly recommend to use the branded memory cards purchased from regular channels for maximum reliability and stability during recording and in high vibration activities.

- **UHS-III rating at least for 4K Video resolution**
(at least 60MB/S or above read and writing speed)
- Capacity up to 128GB (FAT32)

The bigger memory may have an effect on the compatibility with the camera.

Notes:

- ✧ Please format the micro SD on the camera before first using.
- ✧ Please insert the memory card in correct way. if not, the card slot maybe damage by the wrong way.
- ✧ To keep your micro SD card in good condition, reformat it on a regular basis.

■ Powering On+ Off

● To Power On:

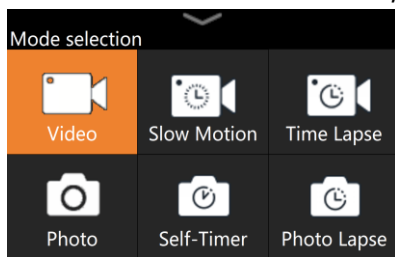
Press shortly the Power button. When information appears on the LCD display, your camera is on.

● To Power Off:

Press and hold the Mode button for three seconds. When information disappears on the LCD display, your camera is off.

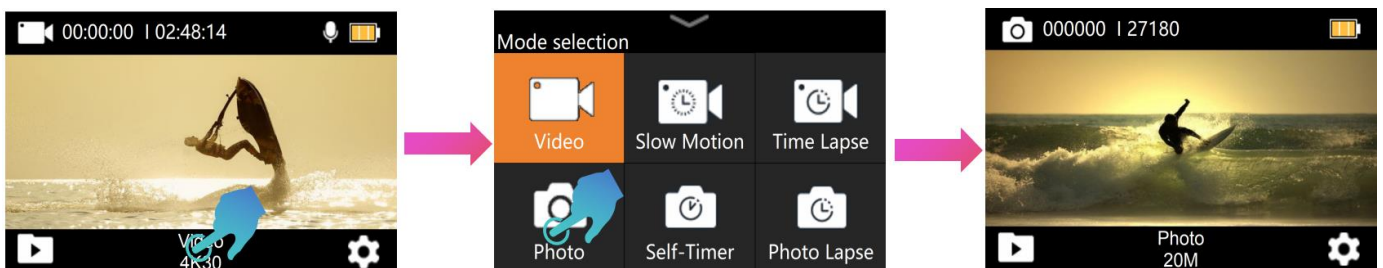
OVERVIEW OF MODES

There are 6 modes: Video, Slow Motion, Time Lapse, Photo, Self-Time, and Photo Lapse.

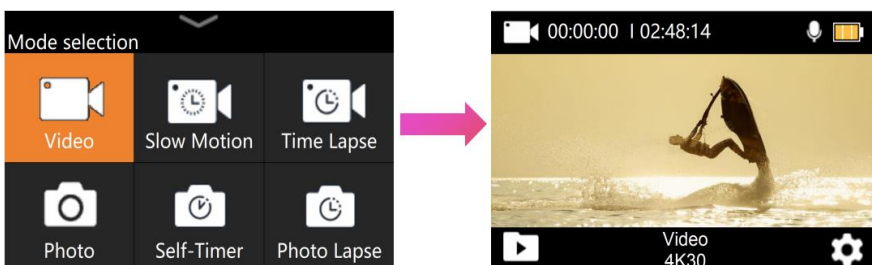


■ Mode Selection

- In video/photo mode, tap the "Mode Selection" icon on the screen to enter the mode selection menu. tap the mode icon of any grid to quickly switch to the desired mode.



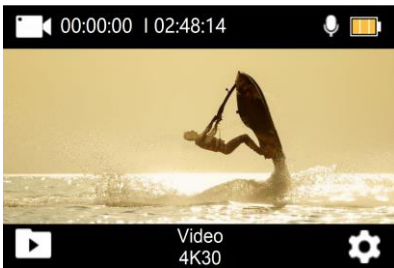
- Exit mode selection menu, click on the "Exit" icon at the top of the screen.



■ Three Video Modes: Video, Slow Motion and Time Lapse

● Video Mode

Video mode is a regular video recording mode, Video Mode is the default mode when you turn on the camera. In Video Mode, press Shutter button, the camera start recording video, press Shutter button again to stop recording video.



- **Slow Motion Mode**

Slow Motion Video, also known as high-frame-rate video, refers to a technique where the camera records video at a higher frame rate and then plays it back at a lower speed, typically 30 frames per second, resulting in a smoother and more dramatic effect.

In this mode, press the shutter button and the camera will record slow motion video. Audio cannot be recorded in Slow Motion Mode.



- **Time Lapse Video Mode**

Time Lapse Video creates video from frames captured at specific intervals. This option lets you capture a time lapse event and immediately view or share it as a video.

In Time Lapse Video Mode, press the Shutter button, the camera will take a series of videos at the set interval. Audio cannot be recorded in Time Lapse Video Mode.



- **Three Photo Modes: Photo, Self-Time, and Photo Lapse**

- **Photo Mode**

Photo mode is single shot mode. In Photo Mode, press Shutter button, the camera takes a photo.



● Self-Timer Mode

A self-timer gives a delay between pressing the shutter release and the shutter's firing. It is most commonly used to let photographers to take a photo of themselves.



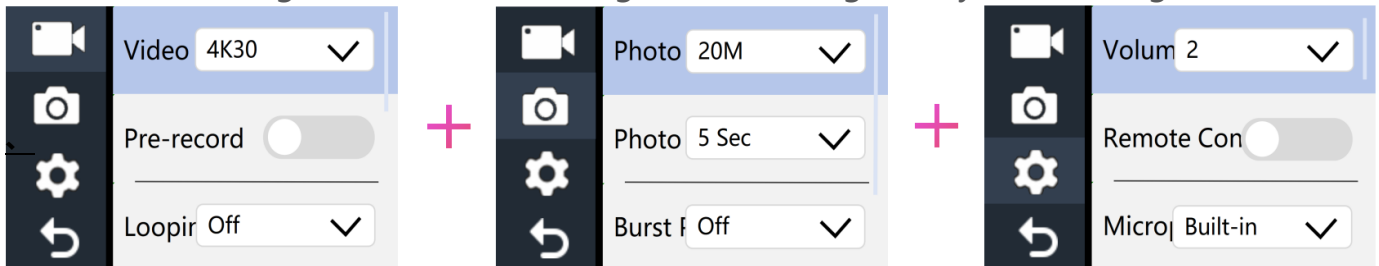
● Photo Lapse Mode

Time Lapse Photo captures a series of photos at specified intervals. Use this mode to capture photos of any activity, then choose the best ones later.



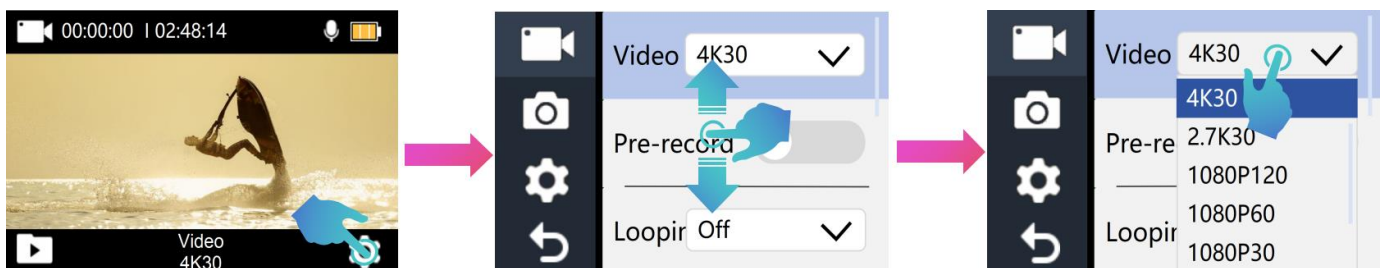
CUSTOMIZING YOUR CAMERA

There are 3 Setting Modes: Video Setting, Photo Setting and System Setting



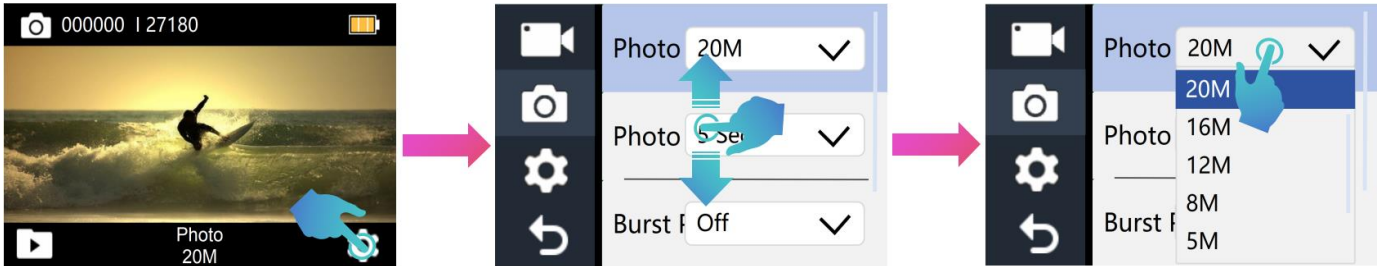
■ Video Setting Mode

- 1) Verified in Video Mode, tap the "Settings" icon in the bottom right corner of the screen to enter Video Setting menu.
- 2) Slide up / down quickly in the gray area on the screen to cycle through various options, tag the target option or press the "Shutter Button" to select the desired option to set.
- 3) Tap the "Return" icon in the bottom left corner of the screen or press the "Power Button" to exit.



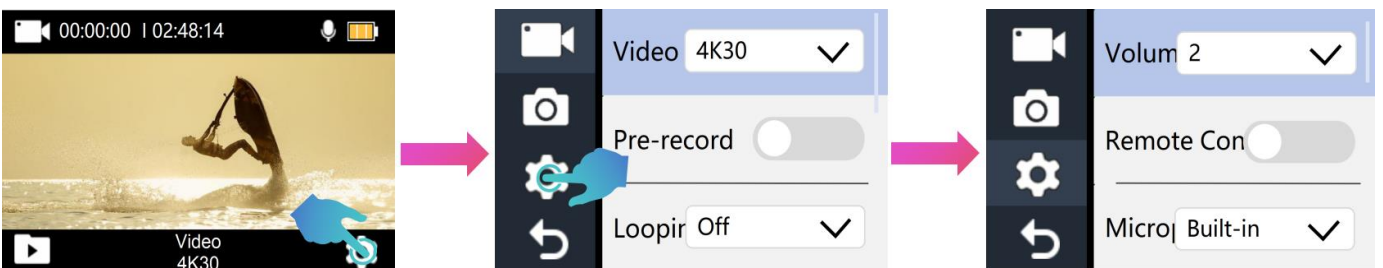
■ Photo Setting Mode

- 1) Verified in Photo Mode, tap the "Settings" icon in the bottom right corner of the screen to enter Photo Setting menu.
- 2) Slide up / down quickly in the gray area on the screen to cycle through various options, tag the target option or press the "Shutter Button" to select the desired option to set.
- 3) Tap the "Return" icon in the bottom left corner of the screen or press the "Power Button" to exit.



■ System Setting Mode

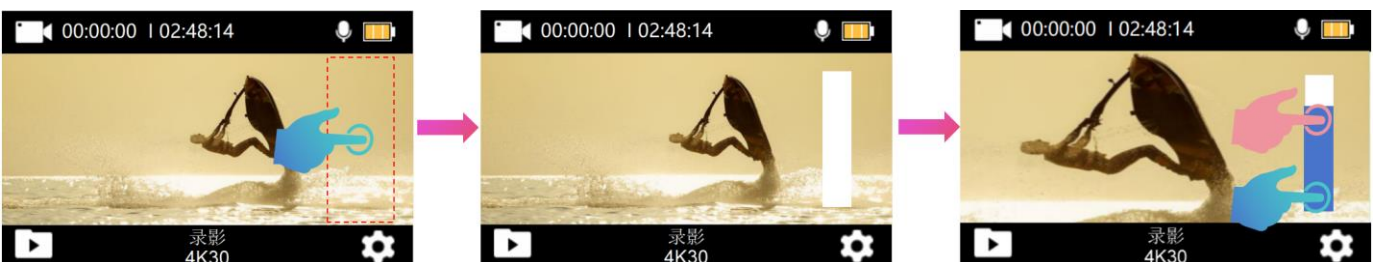
- 1) Verified in Video / Photo Mode, tap the "Settings" icon in the bottom right corner of the screen to enter Video /Photo Setting menu.
- 2) Tap the "Settings" icon on the left side of the screen to enter the system settings menu. or press the "Power Button" to switch to the system settings menu.
- 3) Slide up / down quickly in the gray area on the screen to cycle through various options, tag the target option or press the "Shutter Button" to select the desired option to set.
- 4) Tap the "Return" icon in the bottom left corner of the screen or press the "Power Button" to exit.



ZOOM IN/OUT

The camera supports 5x zoom function and is set to not zoom by default. The zoom function is available in all shooting modes.

Please follow the instructions and illustrations below to use the zoom function.



- (1) Turn on the camera.
- (2) Enter any shooting mode.

- (3) Tap on the zoom area, and the touch bar will be displayed.
 - (4) Swipe up or down in the touch bar area to adjust the focus.
- After no action is taken, the touch bar will automatically hide and exit.

CONNECTING TO WIFI APP

The Wi-Fi App lets you control your camera remotely using a smart phone or tablet. Features include full camera control, live preview, playback and sharing of selected content and more.

■ Download and Install FUN DV app

- **Option 1:** Download the **FUN DV** App or to your phone from the Google Play or Apple App Store.
- **Option 2:** Scan the QR code below to download the **FUN DV** App or to your phone.



Android 7.0
or later



iOS 10.0
or later

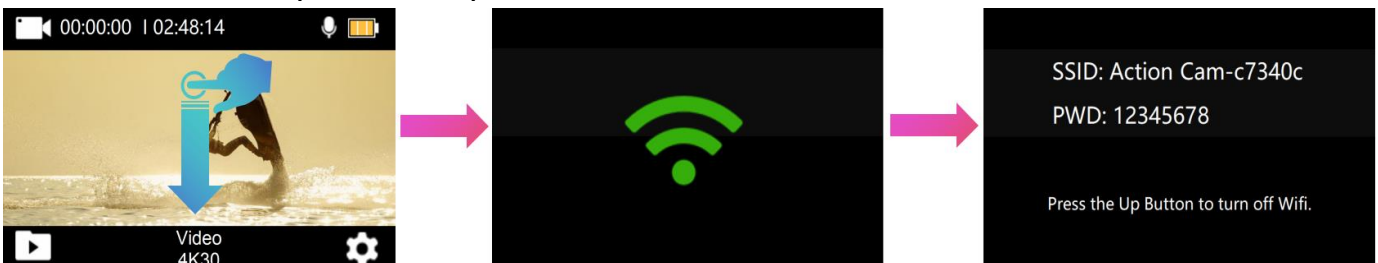


Notes:

Google, Android, Google play, App Store and other marks are the trademarks of Google LLC.

■ Turn On / Off Camera Wi-Fi

- Turn on the camera, and verified it is in Video mode, slide down quickly on the screen or Press and hold the Up Button three seconds to turn on the camera's Wi-Fi.
- In Wi-Fi mode, press the Up Button to turn off the camera's Wi-Fi.



■ Connect to the FUN DV APP

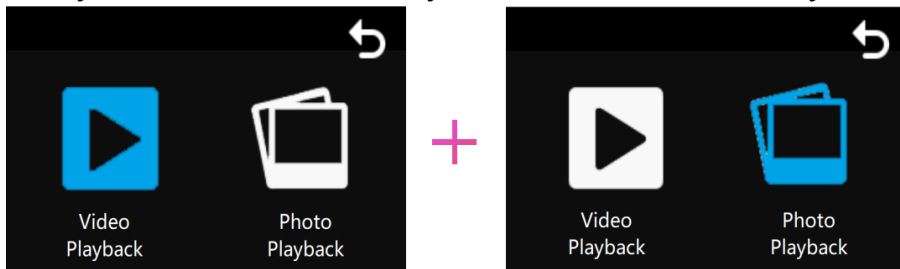
- 1) Turn on Carmera' s Wi-Fi;
- 2) Turn on Wi-Fi Setting of your phone, connect to the Wi-Fi SSID named "Action Cam _xxxx (Random serial number)" ;
- 3) Enter the password: "12345678" ;

4) Launch the "FUN DV" app on your phone.

PLAYBACK YOUR CONTENT

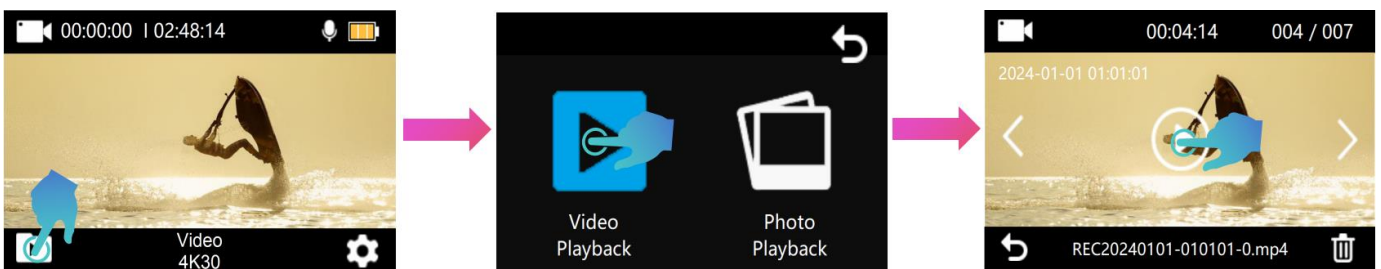
You can play back your content on the camera screen. You can also play back content by inserting the micro SD card directly into a computer or TV. With this method, playback resolution depends on the resolution of the device and its ability to play back that resolution.

2 Playback Mode: Video Playback Mode & Photo Playback Mode.



In Playback Mode, You can playback or delete your content on the camera.

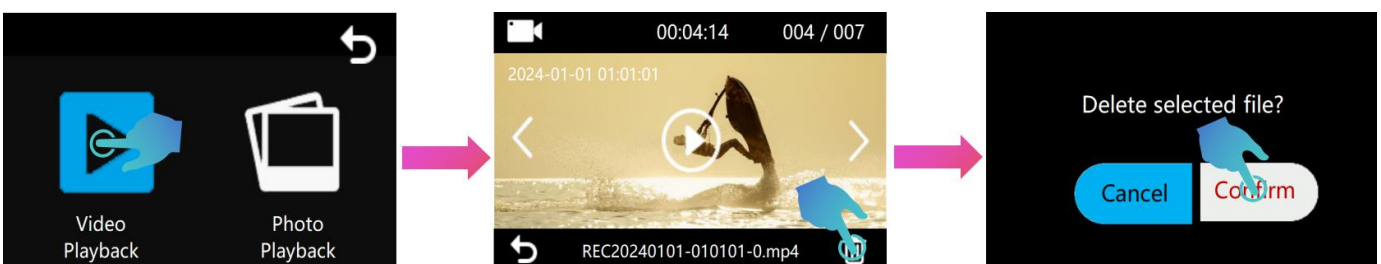
■ Playback videos and photos on your camera



1. Turn on camera.
2. Tap "Playback" icon at the left corner of the screen to enter playback mode.
3. Tap "Video Playback" / "Photo Playback" icon to enter.
4. Tap "Forward" or "Backward" icon to locate video files / playback photo files.
5. Tap "playback" / "Pause" icon or press Shutter Button to start/pause playing video file.
6. To exit, tap return icon or press Power Button.

Note: If your memory card contains a lot of content, it might take a minute for it to load.

■ Delete single file on camera



1. Enter Video / Photo Playback mode.
2. Tap "Forward" or "Backward" icon to locate the video or photo file you want to delete.
3. Tap the "Delete" icon in the bottom right corner of the screen.
4. Tap the "Confirm" icon to delete the selected file.

REMOTE CONTROLLER

Place the Remote Control On Your Wrist and Acquiesce Ultra-convenient Control For Hiking,Biking, Skiing,Bungee and more while installing the camera on your Helmet or other place.

- Remote: Splash-proof only / Range: 5M
- How to turn on/off the remote function



Select **ON/OFF** in the System Setting Menu to turn on/off the remote controller.

Note: Verify the camera is in Video/Photo preview mode first, if the camera is set in Playback or Setting Menu, the camera can not receive the remote signal and can not be controlled by the remote.

■ VIDEO

- **To start recording**

Press the Grey Video Button.

- **To stop recording**

Press the Grey Video Button again.

■ PHOTO

- **To take a photo**

Press the Red Photo Button. The camera will emit a camera shutter sound.

BATTERY

The camera contains sensitive components, including the battery. Avoid exposing your camera to very cold or very hot temperatures. Low or high temperature conditions may temporarily shorten the battery life or cause the camera to temporarily stop working properly. Avoid dramatic changes in temperature or humidity when using the camera, as

condensation may form on or within the camera.

■ **Charging the Battery**

1. Connect the camera to USB power supply (5V/1A commended).
2. The charging status light remains ON while the battery is charging.
3. The charging status light will turn OFF when the battery is fully charged.

■ **Maximizing Battery Life**

If the battery reaches 0% while recording, the camera saves the file and powers off.

To maximize battery life, follow these guidelines when possible:

- Turn off Wireless Connections
- Capture video at lower frame rates and resolutions
- Use Screen Saver setting.

Specification could be subject to modification due to updating without notice, please regard the actual product as the standard form. If need the newest updated software, please contact our after sale service team!

CONTACT US

For any inquiries, issues or comments concerning our products, please send E-mail or call us. We will respond as soon as possible.

E-Mail: cs@onlincam.com

Web: www.onlincam.com